

A large red circle is centered on the page, containing the title and subtitle text.

XVR Kits

Quick Start Guide

Please read the Quick Start Guide carefully before using the product and keep it.
Related tools and documents of products, please download from www.herospeed.net.

Statement

Thank you for purchasing our products, if you have any questions or requires, please contact us. This Guidelines adapt for XVR and HD cameras in the kits. It will be updated subject to product's updating; new version will be not noticed specifically. If this manual's any products description not accord with the real products, please in kind prevail.

Safety Precautions

1. After the equipment is arranged, please timely modify the default user password to prevent theft.
2. Please do not place the equipment and installed in direct sunlight or near the heating equipment.
3. Please do not install the equipment in a wet, dusty or soot place.
4. This equipment should be kept horizontal during installation and avoid installing in locations subject to excessive vibration. Pay attention to prevent the product fall.
5. Do not drop or splash the liquid on the equipment, and ensure that the equipment can not be placed on the liquid filled items to prevent the flow of liquid into the device.
6. Please install in a well-ventilated place, do not plug the ventilation of the device.
7. Please use the equipment in the rated input and output range.
8. Please do not arbitrarily disassemble the equipment.
9. Please transport, use and store the equipment in the permissible humidity and temperature range.

Disclaimer

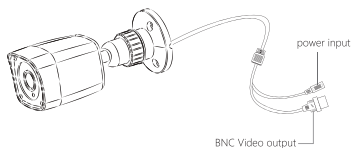
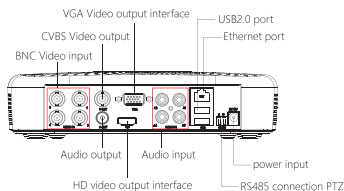
The following responsibilities are exempt or restricted, please pay special attention to:

1. Our Company shall not be liable to you or any person for personal injury or property damage for any of the following reasons, and shall not responsible for the incorrect installation or use not in accordance with the requirements ; for the purpose of safeguarding the State or the public interest; force majeure; Your own or third party reasons (including but not limited to the use of third party products, software or components and other issues).
2. Our company has not been in any express or implied way to ensure that this product is suitable for special purpose or use, this product shall not be used for medical / safety equipment or other product failure may lead to life-threatening or personal injury applications and mass destruction Weapons, biological and chemical weapons, nuclear explosions or any unsafe use of nuclear energy and other dangerous or contrary to humanitarian use. Any loss or liability arising from such use will be at your own expense.
3. Products under the correct installation and use can be aware of a specific occurrence of illegal intrusion, but can not avoid the accident or the resulting personal injury or property damage. In daily life please be vigilant and strengthen your awareness of safety.
4. The Company is not responsible for any indirect, incidental, special or punitive damages, requests, loss of property or loss of any data or documents. To the maximum extent permitted by law, our liability does not exceed the amount paid by you when you purchase this product.

Product Rear Panel description

XVR rear panel interface description: BNC Video input, CVBS Video output, Audio output, VGA Video output interface, HD video output interface, Audio input, Ethernet port, USB2.0 port, RS485 connection PTZ, power input, as below:

Analog camera interface Description: power input interface, BNC video output interface, as below:



Notes: Image for instruction use only, the final goods are subjected to the real object.

XVR Kits Quick Installation Guide

XVR Kits is convenient for installation via easy plug & use, no need any set up.

Start the installation guide step into:

Step 1: Installation Preparation

Install XVR hard drive. Make sure all power is turned off before installing.

Installation tools: Cross screwdriver (Please use the professional hard disk recommended by supplier).



(1) Unscrew the four fixed screws on the base plate and remove the upper cover.



(2) Fix the HDD on the bottom panel with screws.



(4) Fix the upper cover with screws.

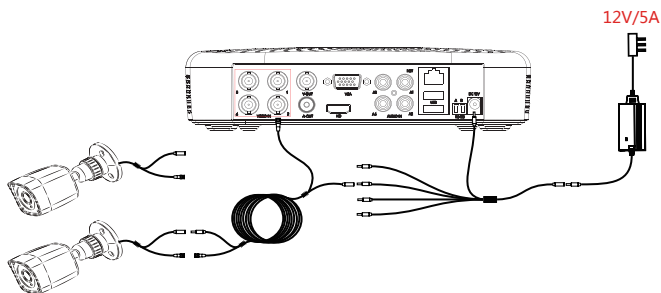


(3) Connect the HDD power cable and data cable between PCB board and HDD.

Note: The picture is for reference only, the final product to prevail in kind

Step 2: Device Connection

Use the 5ch power cable splitter to connect with the power supply, and another end connect with XVR recorder and the HD camera power supply. XVR recorder will preview the screen via the BNC cable. default (XVR address: //192.168.1.88), the connect way as below:

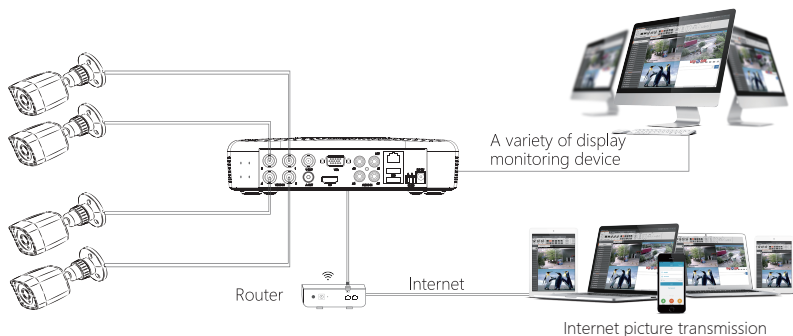


Note: The picture is for reference only, the final product to prevail in kind

Step 3: Make sure XVR kit working well :

Connected the XVR with the display, HD camera access XVR via the BNC, XVR and the camera plug in the power supply, without any operation, because it has been configured successfully before the factory, when the display appears on the analog camera video.

Note: The product configuration power adapter voltage is 12V, please ensure that the power supply (100V ~ 240V) normal, not below or above the power supply range, otherwise the device will get seriously damaged.

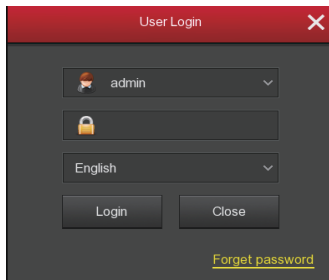


Note: The picture is for reference only, the final product to prevail in kind

System Login

Start up the XVR, right click the desktop and enter the user login interface. Input the user name and password, click " Login ".

System default user name : "admin" password : "12345".



Preview

Enter preview interface after device start up. Preview interface include date and time of system, and channel name. Login system, double left click to switch between full screen and multi-screen.

Menu Basic Operation Instructions

1) Enter menu mode

Login system, right click to popup shortcut menu.

Left click [menu], enter the main menu interface.

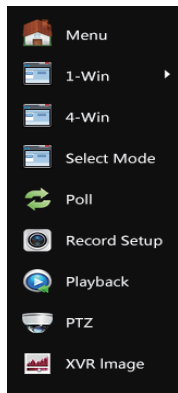
Left click [playback], enter playback operation interface.

Left click [record setup], enter record setting operation interface.

2) Exit menu mode

Right click to exit menu mode.

In the menu mode, right click to return to the previous menu (also for other menus).



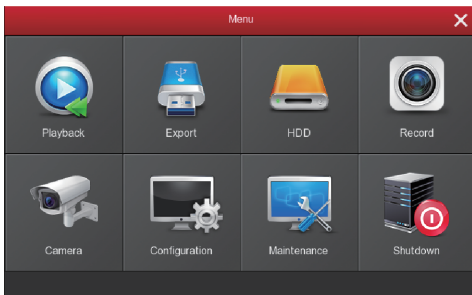
Shortcut Menu Introduction

Click the right mouse button pop-up shortcut menu, shortcut menu consists of the following three parts:

Preview mode: Select the preview mode in the menu bar you like.

Shortcut menu mode: It contains **【Poll】** , **【Record】** , **【Add Camera】** , **【XVR image】** , you can click and the enter corresponding menu directly.

Main menu : It contains **【Playback】** , **【Export】** , **【HDD】** , **【Record】** , **【Camera】** , **【Configuration】** , **【Maintenance】** , **【Shutdown】** eight parts.



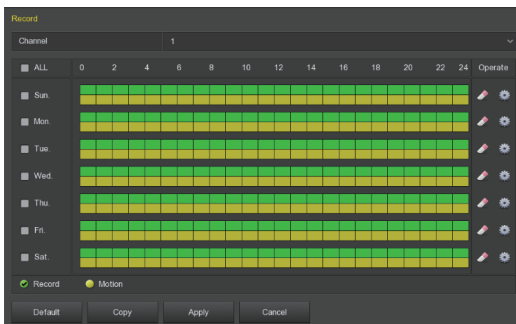
Recording Setting

1、 HDD formatting. Make sure that the hard disk is detected and works well. (You can check status of HDD from menu "HDD"- "General").

2、 Enter "Record" interface to set recording from shortcut menu "Record" or main menu "Record". Default setting is all channels are recorded 24 hours a day.

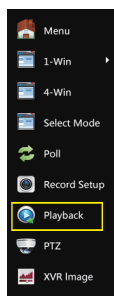


3、 Motion Detection Setting. Enable "Motion" to activate motion recording, motion sections have no more than 6 times each day. If the setting of manual record and motion record are overlapped, it can only save the motion records while motion detection comes up.



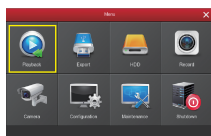
Playback

Enter "Playback" interface by clicking "Playback" from shortcut or main menu, select channels and search the record files and playback what you want.

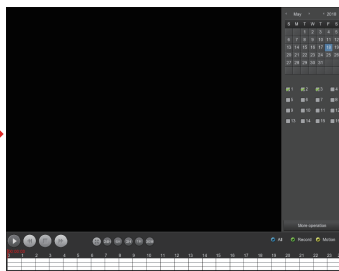


Shortcut Menu

Or



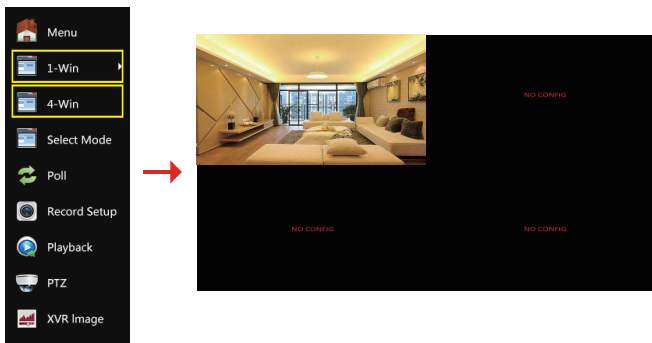
Menu Interface



(Video Playback Interface)

Live View

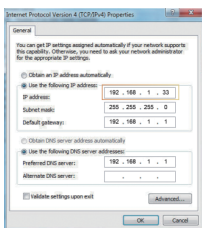
XVR kits default match cameras device, connect all the devices to XVR, power on, connect the monitor device, then can real time preview. Left click **【1-Win】** / **【4-Win】** in the menu, and enter real time view interface, can add one or more cameras monitor Win at the same time.



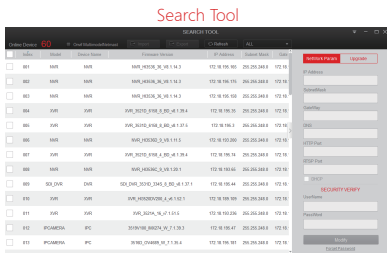
PC Side LAN Access

XVR LAN login (the PC and the device are in the same router)

- ① Make sure the recorder and the connected computer are in the same segment. If not, please set IP address of your PC (computer) the same segment as the XVR's, for example: '192.168.1.33, but it must be different IP as the XVR's. (XVR default IP address is 192.168.1.88).
- ② Open IE browser, choose Tool- internet item-safe-default level-ActiveX Controls and plug-ins, All choose start using.
- ③ Open "Search Tool", double-click the target device from the search result to enter the login interface, or open the IE browser to enter the XVR address: such as http://192.168.1.88/ (If the port 80 of the XVR is changed to other, you need to add the changed port) to enter the login interface.
- ④ Login XVR: Enter the username and password and click "Login"(Notes: Default user: "admin", password: "12345").
- ⑤ Preview XVR through PC: Click "play" button in the bottom interface of 'LiveVideo'.

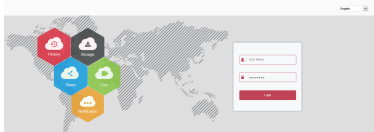


①



③

(First connect need download and install plugin)



④



⑤-1



⑤-2

Mobile App Access

Step 1: Download and install Bitdog on smart phone by following way:

1. In the Android phone App Store or iPhone App Store enter "Bitdog" search, download and install.
2. Scan the following QR codes to download and install the App.



Android App QR



iOS App QR

3. Download from the following websites:

Android App: <https://play.google.com/store/apps/details?id=com.gzch.lsplat.bitdog>

iOS App: <https://itunes.apple.com/app/id1419463554>

Step 2: Account login

Open Bitdog App, click " " of the sliding sidebar to enter the login interface, enter the account number, password, and then click "Login" (New user please register an account).

Step 3: Add a device

In the sliding menu, click on the right to enter the main interface → click " " → click " + " → click " " Add device " → click "SN Add" → Scan the QR Code printed on the device sticker or posted on the P2P interface → Enter device user name, password and Captcha (printed on the label), click "Submit" → Click "Please set the device name", enter the device name, click "Done"; Click "Please choose a group", choose camera group, click "Finish".

Step 4: Live preview

In the main interface, select "Real time", click the " " to enter the "Device manage" interface, choose the device channel you want to preview, click "Done". Start to play the real-time video.